



\* £350,000 - £360,000 \* A spacious terraced family home offering four bedrooms including a loft-converted master, an open plan kitchen/diner and a generous rear garden. Ideally positioned close to schools, transport links and amenities.

- Terraced Family Home
- Open Plan Kitchen Diner
- One Single Bedroom
- Loft Converted Master Bedroom with Eaves Storage
- Double Glazing and Gas Central Heating
- Beautiful Bay Fronted Lounge
- Three Double Bedrooms
- Four Piece Family Bathroom
- Generous Rear Garden
- Close to Excellent Schools and Southend East Train Station

## Stornoway Road

Southend-on-Sea

**£350,000**

Guide Price





# Stornoway Road



This well-proportioned terraced house welcomes you with an entrance hall leading to a bright bay fronted lounge. To the rear, the property features a generous open plan kitchen/diner, ideal for family living and entertaining. The first floor offers two double bedrooms, one single bedroom and a spacious four piece bathroom. A further landing provides access to a loft conversion, forming a superb master bedroom complete with eaves storage. The home is complemented by a generous rear garden, double glazing and gas central heating throughout.

Positioned on Stornoway Road in Southend-on-Sea, this property is perfectly placed for families. It sits within catchment of Bournemouth Park Academy and Cecil Jones Academy, while also being close to excellent grammar schools. A wealth of amenities, bus links and Southend East Train Station are all within easy reach, with further conveniences such as shops, parks and the seafront nearby.

## Four Bedroom Terraced House

### Entrance Hall

#### Lounge

15;4 x 9'9

#### Kitchen/Diner

16'4>9'9 x 13'2>6'1

### Landing

#### Bedroom Two

13'4 x 8'3

#### Bedroom Three

8'9 x 8'3

#### Bedroom Four

7'6 x 6'5

#### Three Piece Bathroom

9'9 x 6'5

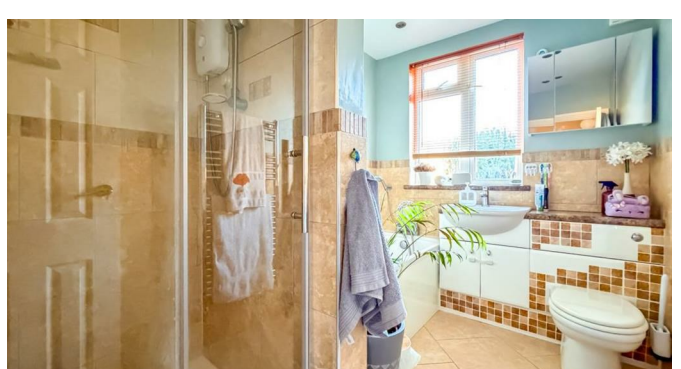
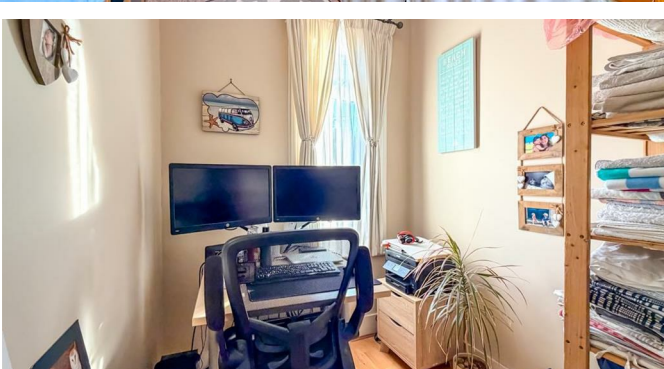
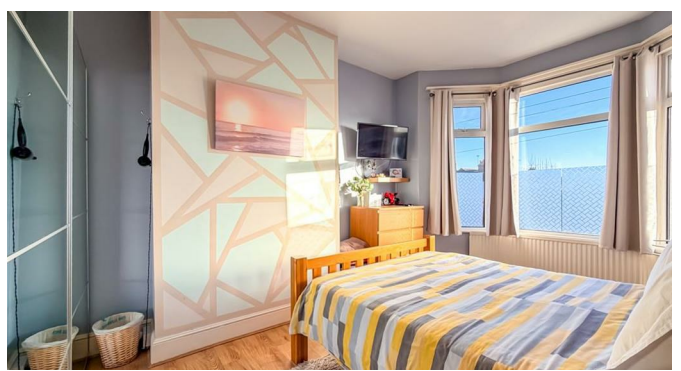
### Landing

#### Bedroom One

14'2 x 11'7>8'11

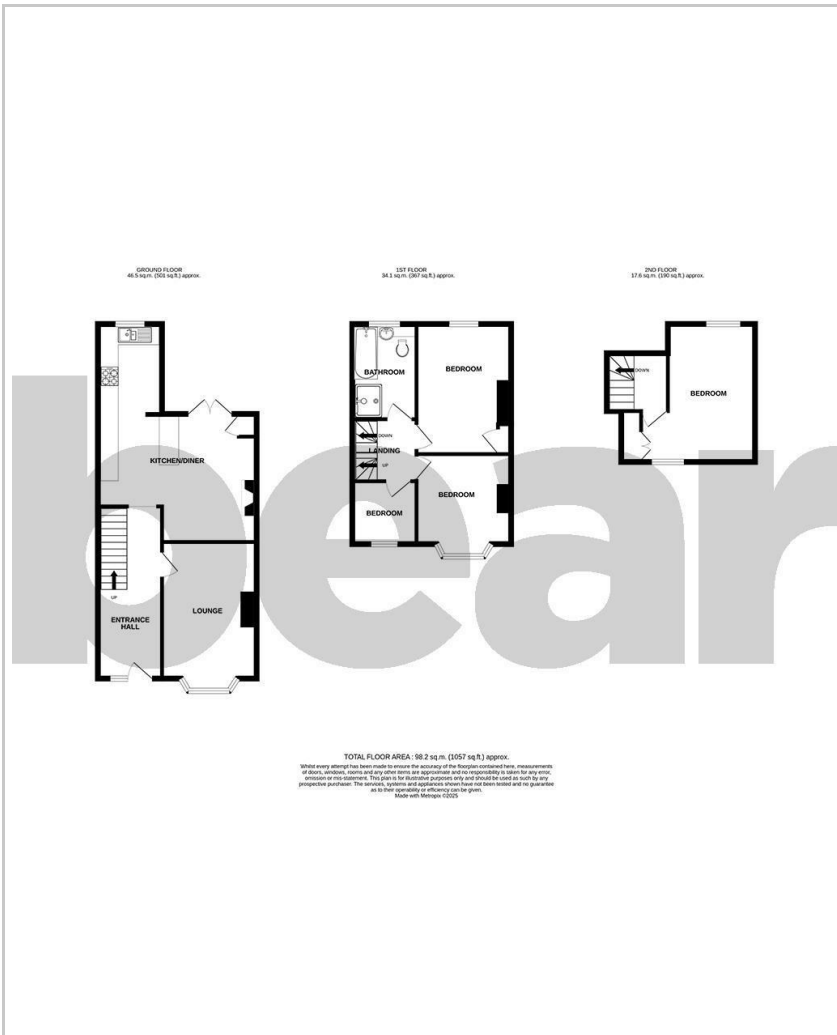
### Garden



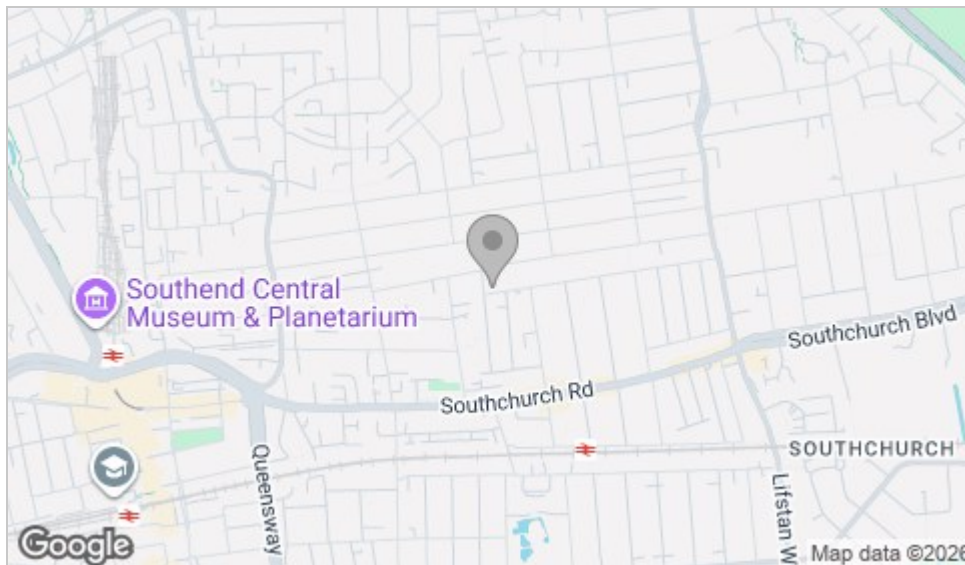




## Floor Plan



## Area Map



## Viewing

Please contact our Southend-on-Sea Office on 01702 811211 if you wish to arrange a viewing appointment for this property or require further information.

These particulars, whilst believed to be accurate are set out as a general outline only for guidance and do not constitute any part of an offer or contract. Intending purchasers should not rely on them as statements of representation of fact, but must satisfy themselves by inspection or otherwise as to their accuracy. No person in this firm's employment has the authority to make or give any representation or warranty in respect of the property.

204 Woodgrange Drive, Southend-on-Sea, Essex, SS1 2SJ

Office: 01702 811211 [info@bearestateagents.co.uk](mailto:info@bearestateagents.co.uk) <https://www.bearestateagents.co.uk>

## Energy Efficiency Graph

